

SUMMER 2025 NEWSLETTER



IN THIS ISSUE

Safety Focus

New Product—Elevation Book

Annual Maintenance Shutdown

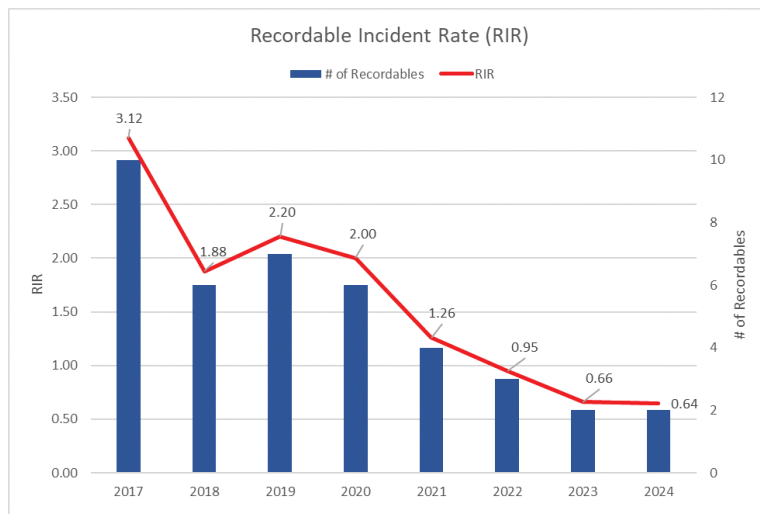
Wind Farm Update

Wind Farm Site Selection

Government Representatives Visit

Safety Stays Front of Mind

Port Hawkesbury Paper is committed to and focused on safety performance. We continue to modernize and improve our training, education, and best practice sharing within the industry and with our neighbors, ensuring that employees are well-prepared and knowledgeable about safety practices. The results indicate that our efforts are helping to make the facility a safer place to work.





ELEVATION BOOK

Latest Product Development Efforts —Elevation Book

Always looking for new opportunities to fully utilize the world-class facility, Port Hawkesbury Paper has tapped into the modest growth of the book market and has developed a high-quality book paper, called Elevation Book. The paper is designed for educational texts, workbooks, novels, trade and industry books.

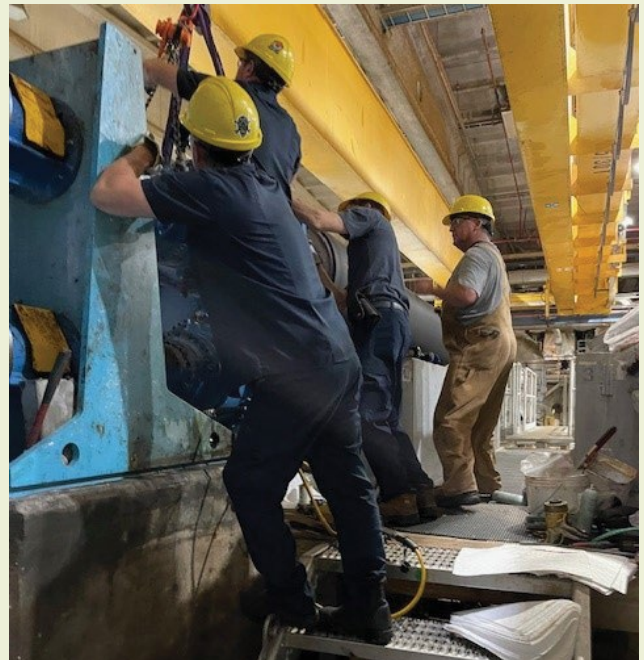
Using state-of-the-art pulping and machine technology, Port Hawkesbury Paper is able to offer higher fibre quality and a fibre/clay matrix that results in a better surface and improved printing. PHP is also focused on sustainability by using mechanical pulp, which produces twice the yield, resulting in a more efficient use of forest resources and significantly fewer trees harvested for each ton of paper. For more information on Elevation Book visit:

[Elevation Book | Port Hawkesbury Paper](#)

Time for Annual Maintenance Shutdown Means Better Operations

Each year, Port Hawkesbury Paper takes time for facility-wide maintenance projects. The work allows us to invest in the operations, improve and repair equipment and complete planned capital projects.

Thank you to our employees for their hard work and long hours, and to the 100+ external contractors and tradespeople involved in our annual maintenance shutdown. Workers from at least four different countries completed a long list of projects, totaling approximately \$3 million in investment. Over the past 12 years in business, PHP has invested nearly \$70 million in capital projects. We celebrate the safe and successful work that continues to make Port Hawkesbury Paper one of the world's leading paper manufacturers.



Work Ramps Up at PHP Wind Site

Construction has ramped up through June at PHP Wind's Goose Harbour Lake Wind Farm. The number of workers on site recently surpassed 100 people, with most of the current construction effort being focused on road and wind turbine pad construction. New culverts have been delivered to the site and are being installed according to the terms of our environmental permits.

Construction trailers and temporary power are now in place at the project laydown area at 127 Hayden Road, near the intersection with Old Mulgrave Road.



Civil work at the project substation has commenced, with work started on the substation foundation.

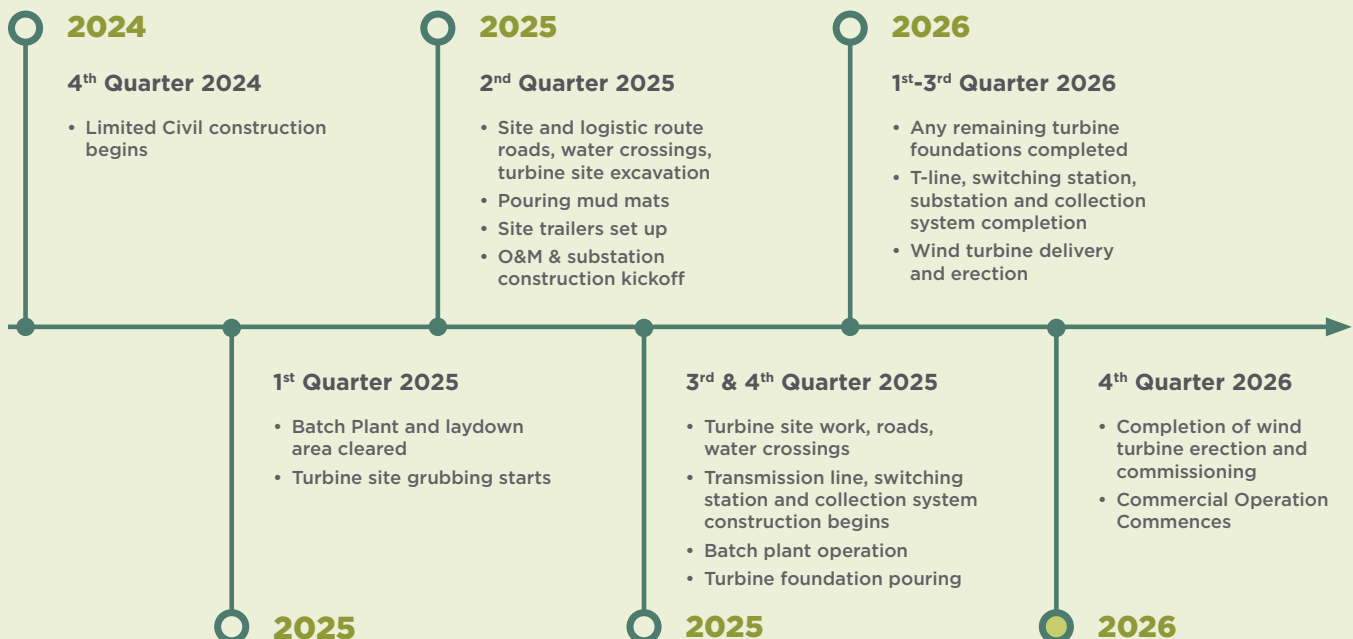
Ordering of engineering equipment and materials continues. Rebar, anchor bolts, and specialized formwork for the wind turbine foundations are being delivered. Wind turbine foundation construction has begun and pouring of first foundation will occur in August 2025.

Wind turbine blade fabrication commenced in June 2025. We remain on schedule with turbine component manufacturing and delivery, with the wind turbine package delivery to the Port of Mulgrave expected to start by April 2026. The project remains on schedule as per our website (www.phpwind.ca).

If you have any questions, please email info@phpwind.ca, check out the contact page on the website, or get in touch with one of your Community Liaison Committee members.

Earlier this Spring, CBC Nova Scotia highlighted the Goose Harbour Wind Farm Project and the impact it will have on the province's goals toward CO2 emissions reduction.

Link: [Port Hawkesbury Paper Wind Project \(CBC Nova Scotia News, 2025\) on Vimeo](#)



HARNESSING THE WIND: **A Comprehensive Journey Through Site Selection for Port Hawkesbury Paper Wind**

The development of renewable energy infrastructure is a complex endeavor, particularly when it intersects sensitive ecosystems, stringent regulatory frameworks, and the need for community and environmental stewardship. The Port Hawkesbury Paper Wind (PHP Wind) project – ‘Goose Harbour Lake Wind Farm’ exemplifies this complexity. Located in Guysborough County, Nova Scotia, this initiative has undergone a rigorous and iterative site selection process, balancing technological feasibility with environmental integrity and regulatory compliance.

The PHP Wind site was selected, refined, and finalized with the integration of advanced geospatial analysis, the navigation of provincial land entitlement policies, and the collaborative efforts with the Nova Scotia Land Administration, Public Works, Environment and Climate Change (ECC) Department of Natural Resources (NSDNR) and its Integrated Resource Management (IRM) team.

The Goose Harbour Lake Wind Farm is situated near the communities of Lincolnville, Upper Big Tracadie, and Mattie Settlement, at one of the highest elevations in Guysborough County. The project area spans both provincial Crown lands and private parcels, strategically chosen for their wind energy potential and logistical accessibility to reduce the carbon footprint of the provincial power supply.

The PHP Wind site selection process was not linear. It involved multiple iterations, stakeholder consultations, and adaptive planning. As new data emerged, whether from field surveys, community input or government feedback—the project team adjusted turbine locations, road alignments, and clearing extents accordingly, as there was private land entitlement on a remote lake that needed to be accounted for.

Operational datasets were continuously updated and shared with contractors, ensuring that all decisions were grounded in the most current information. This flexibility was essential in navigating the evolving regulatory landscape and maintaining the project’s environmental and social license to operate.



Throughout the site planning process, several key factors were identified, defined, reviewed, assessed and reported before operations proceeded. These included:

- Defining the Study and Assessment Areas
- Navigating Crown Land Entitlements and Property Identification Numbers (PID) Clarifications
- Road Network and Infrastructure Planning
- Environmental Assessment (EA) and Sensitive Area Compliance
- GIS-Driven Iterations
- Submission/Reporting to NSDNR and IRM Teams
- Old Growth Forest (OGF) Considerations
- Lichen Habitat Management
- Significant Habitat and Species at Risk (SAR)
- Field Technology and Real-Time Data Integration
- Development of Sites
- Adaptive Planning and Continuous Improvement

For more information and updates visit [PHPwind.ca](https://phpwind.ca)



Government Representatives Visit

Minister Nolan Young MLA, Nova Scotia Minister of Labour, Skills and Immigration & MLA Chris Palmer recently toured the Port Hawkesbury Paper facility to see paper production in action. Focused on environmental and operational sustainability, we welcome the opportunity to share how this facility plays a key role in providing good jobs & supporting local families.

