

PORT HAWKESBURY PAPER MILL ECONOMIC IMPACT

SPRING 2014

Port Hawkesbury Paper (PHP), the largest industrial employer in Cape Breton, produces supercalendered paper and manages over 500,000 hectares of Crown land. Through its direct and spinoff impacts, **the mill is characterized as the economic mainstay of Inverness, Richmond and Guysborough counties, with its economic influence felt as far away as southwest Nova Scotia.**

MANAGES OVER
500,000
hectares
OF CROWN LAND

Annual spending in the province exceeds \$170 million. This spending triggers additional output in the rest of the Nova Scotia economy valued at an estimated \$168 million.

Value of output:
EXCEEDS
\$170 million

PHP creates an estimated 1,100 full-time equivalent jobs, with 325 at the mill and another 775 in spinoff activities.

Jobs:
AN ESTIMATED
1,100 full-time
EQUIVALENT JOBS

Through its direct and spinoff activities, PHP generates over \$112 million in Nova Scotia GDP. Direct activities alone account for 1% of manufacturing GDP in the province as a whole.

GDP:
GENERATES OVER
\$112 million

PHP generates approximately \$24 million in direct labour income. This equates to an average of \$74,000 per employee, double the average industrial wage in Nova Scotia.

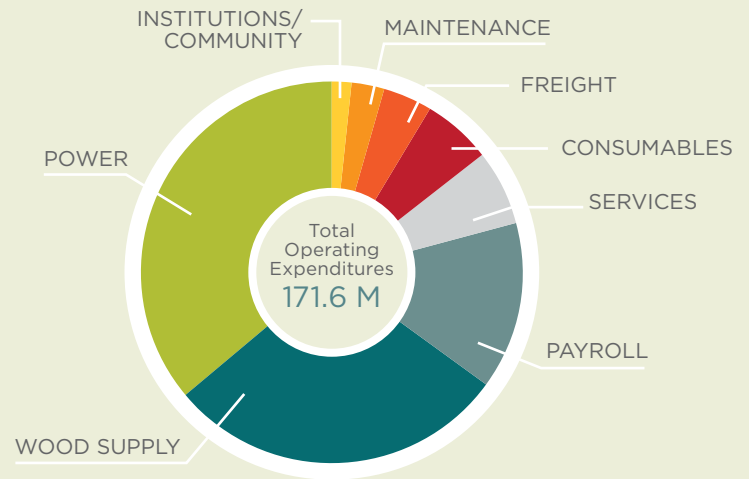
Income:
Double
THE AVERAGE INDUSTRIAL
WAGE IN NOVA SCOTIA

Tax revenues of all types, from both direct and spinoff activities, amounts to approximately \$23 million annually. This includes personal income tax, taxes on products and production, and municipal taxes.

Tax Revenue:
\$23 million
ANNUALLY

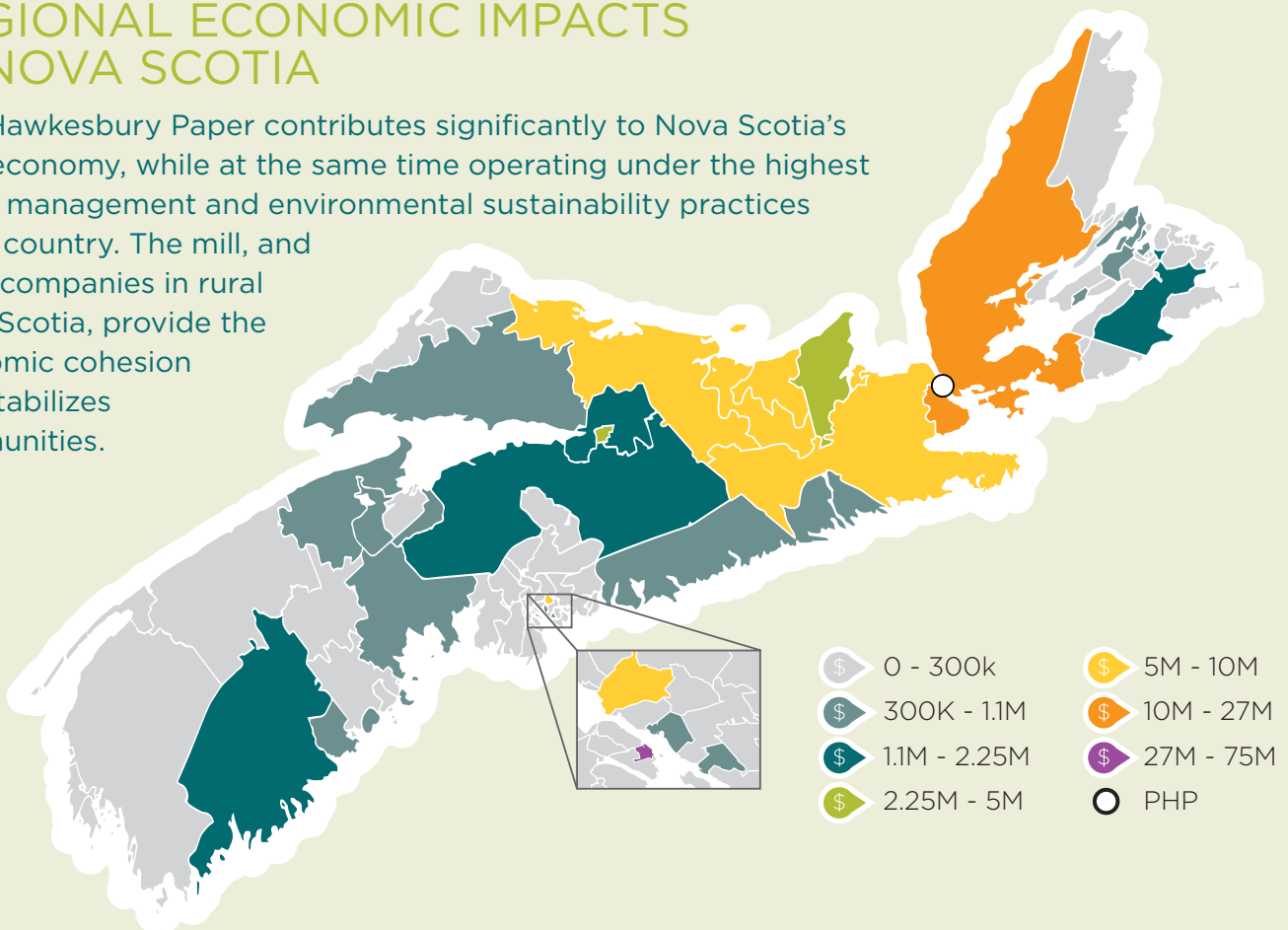
PORT HAWKESBURY PAPER MILL SPENDING IN NOVA SCOTIA

Spending in Nova Scotia alone in 2013 exceeded \$171.5 million. In addition to these expenditures, PHP spent another \$40 million elsewhere in Canada and the U.S.



PORT HAWKESBURY PAPER MILL REGIONAL ECONOMIC IMPACTS IN NOVA SCOTIA

Port Hawkesbury Paper contributes significantly to Nova Scotia's rural economy, while at the same time operating under the highest forest management and environmental sustainability practices in the country. The mill, and other companies in rural Nova Scotia, provide the economic cohesion that stabilizes communities.



CONTENT SOURCE: ECONOMIC IMPACT OF THE PORT HAWKESBURY MILL | GARDNER PINFOLD CONSULTANTS INC. | WWW.GARDNERPINFOLD.CA



Port Hawkesbury Paper
120 Pulp Mill Road
Port Hawkesbury, Nova Scotia B9A 1A1

T 1-800-989-3608
E customerservice@porthawkesburypaper.com
www.porthawkesburypaper.com